

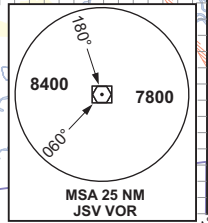
**STANDARD ARRIVAL
CHART -
INSTRUMENT
(STAR)**

TRANSITIONAL ALTITUDE
8000'
TRANSITIONAL LEVEL
ATC

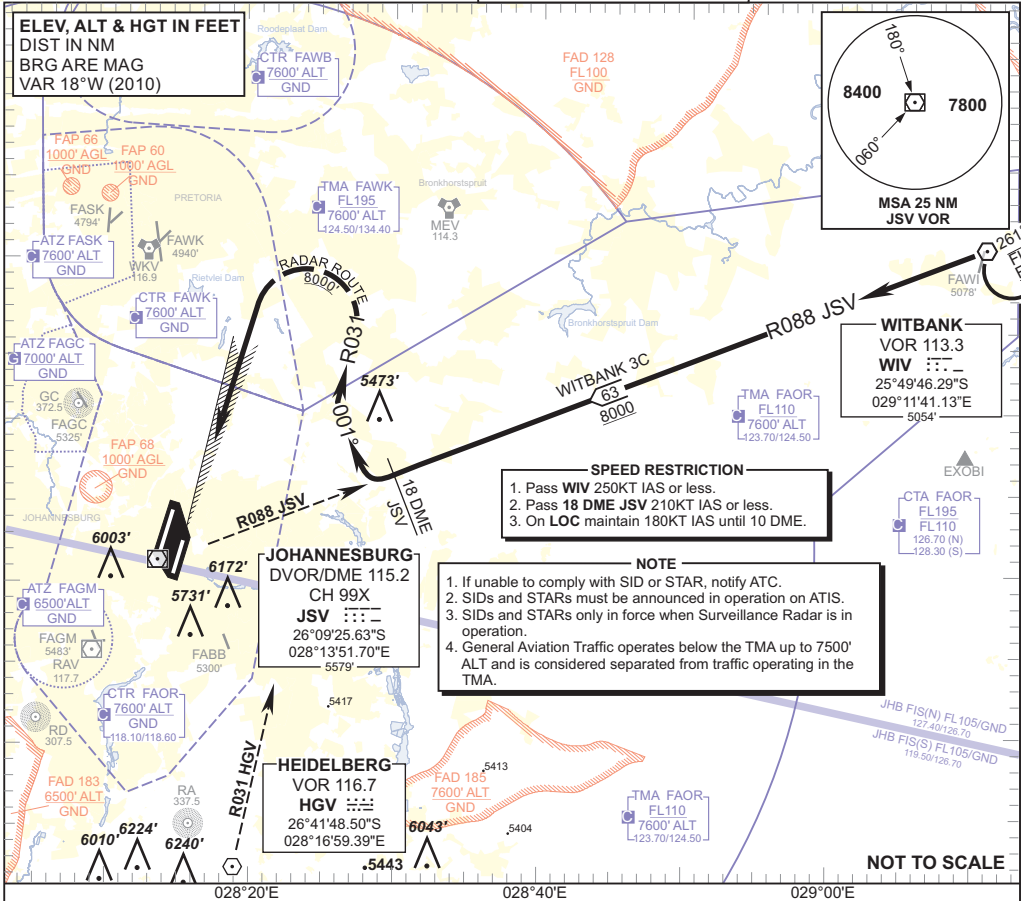
RADAR APP S 124.50 TWR E 118.60
E 124.50 W 118.10
W 123.70 ATIS 126.20
DIR 121.40 115.20
ACC N 126.70 SMC 121.90

JOHANNESBURG
(O.R. TAMBO INTERNATIONAL)
RWY 21L
WITBANK 3C

**ELEV, ALT & HGT IN FEET
DIST IN NM
BRG ARE MAG
VAR 18°W (2010)**



25° 40'S
26° 00'S
26° 20'S



SPEED RESTRICTION

1. Pass **WIV** 250KT IAS or less.
2. Pass **18 DME JSV** 210KT IAS or less.
3. On **LOC** maintain 180KT IAS until 10 DME.

NOTE

1. If unable to comply with SID or STAR, notify ATC.
2. SIDs and STARs must be announced in operation on ATIS.
3. SIDs and STARs only in force when Surveillance Radar is in operation.
4. General Aviation Traffic operates below the TMA up to 7500' ALT and is considered separated from traffic operating in the TMA.

**WITBANK 3C.
RWY 21L**

Leave WIV on R088 JSV (INBD). Passing 18 DME JSV turn right onto track 001° to intercept R031 HGV (OUBD) for radar vectoring onto the ILS LOC RWY 21L.

COMMUNICATION FAILURE PROCEDURE (Squawk 7600)

Before WIV: Proceed to WIV and enter the WIV hold. Hold at last assigned level for minimum 5 MIN, then descend to FL130 in the hold or maintain last assigned level if below FL130. Leave WIV on the "After WIV" Communication Failure Procedure.

After WIV: Continue on the routing for the **WITBANK 3C STAR**. Passing 18 DME JSV descend to FL090. Passing 15 DME JSV on R031 HGV turn left onto track 301° and descend to 8000' ALT. Crossing R041 JSV turn left onto track 241° to intercept the ILS LOC RWY 21L. Complete a straight-in ILS APCH and land RWY 21L.

Note: Aircraft entering the TMA at FL110 and below are to enter the WIV hold at last assigned level, and continue on the routing for the WITBANK 3C STAR.

Caution: Holding patterns below FL110 will be conducted partially outside controlled airspace.

In the event of a missed approach with the intention of diverting to an alternate aerodrome, proceed as follows:

- To the North and North-West: Follow the routing for the VASUR 3B SID.
- To the North-East: Follow the routing for the EGMEN 2B SID (Jet ACFT) or EXOBI 3B SID (Turboprop ACFT).
- To the South-East: Follow the routing for the APDAK 2B SID.
- To the South and South-West: Follow the routing for the RAGUL 3B SID.

CHANGE: SPEED RESTRICTION BLOCK

NOT TO SCALE